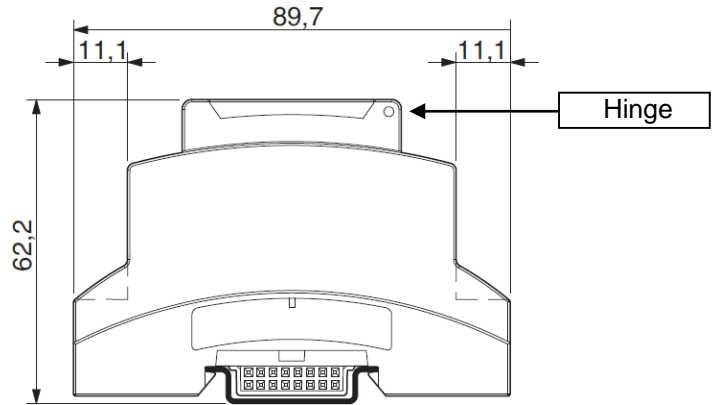
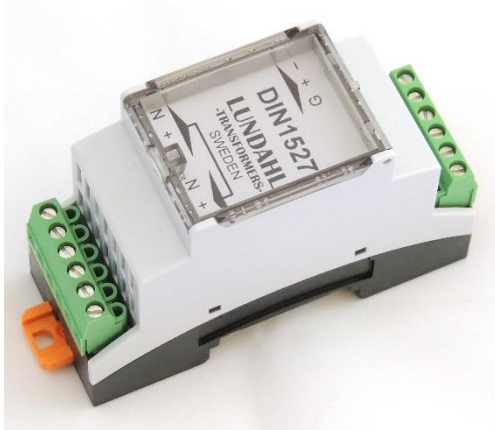


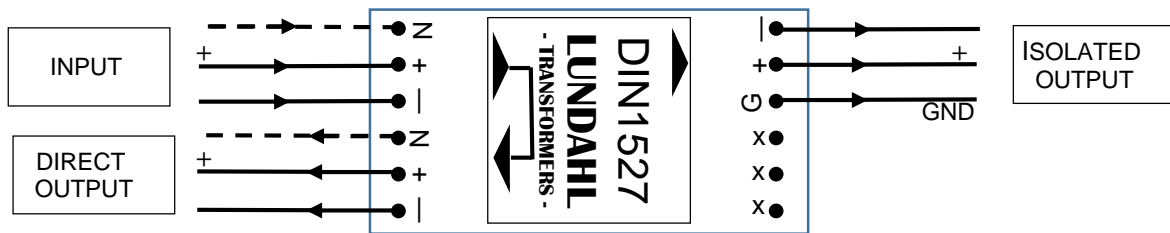
## Transformer unit DIN1527

DIN1527 is a ready-to-use transformer unit with screw terminals. DIN1527 can be used for galvanic isolation, balanced/unbalanced conversion and splitting 1 direct -> 1 direct + 1 isolated output.

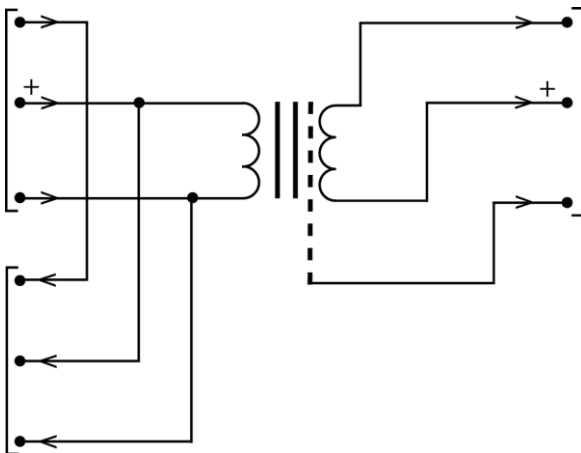
As indicated in the name, the unit is designed to fit on DIN rail (EU EN50022, US TS35) profiles, but it also has facilities for screw mounting. The internal transformer is our general purpose LL1527



----- Suggested connection -----



----- Technical details -----



<b>Transformer static resistance primary + secondary:</b>	200Ω
<b>Core:</b>	Mu metal lamination core
<b>Max signal level (THD less than 1%):</b>	+16 dBu @ 50 Hz
<b>Frequency response @ 0 dBu (source 150Ω, load 10kΩ)</b>	10 Hz - 60 kHz +/-1 dB
<b>Distortion (THD) at 50 Hz (source 150Ω )</b>	< 0.2 % @ 50 Hz, for all signal levels -40 through +10 dBu
<b>Loss across transformer with load 10kΩ</b>	0.2 dB
<b>Isolation between input and output sides:</b>	1 kV

R160524 PL

